



Scratch Building Houses Plus



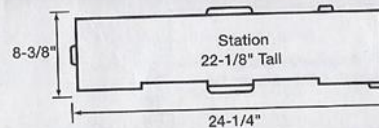
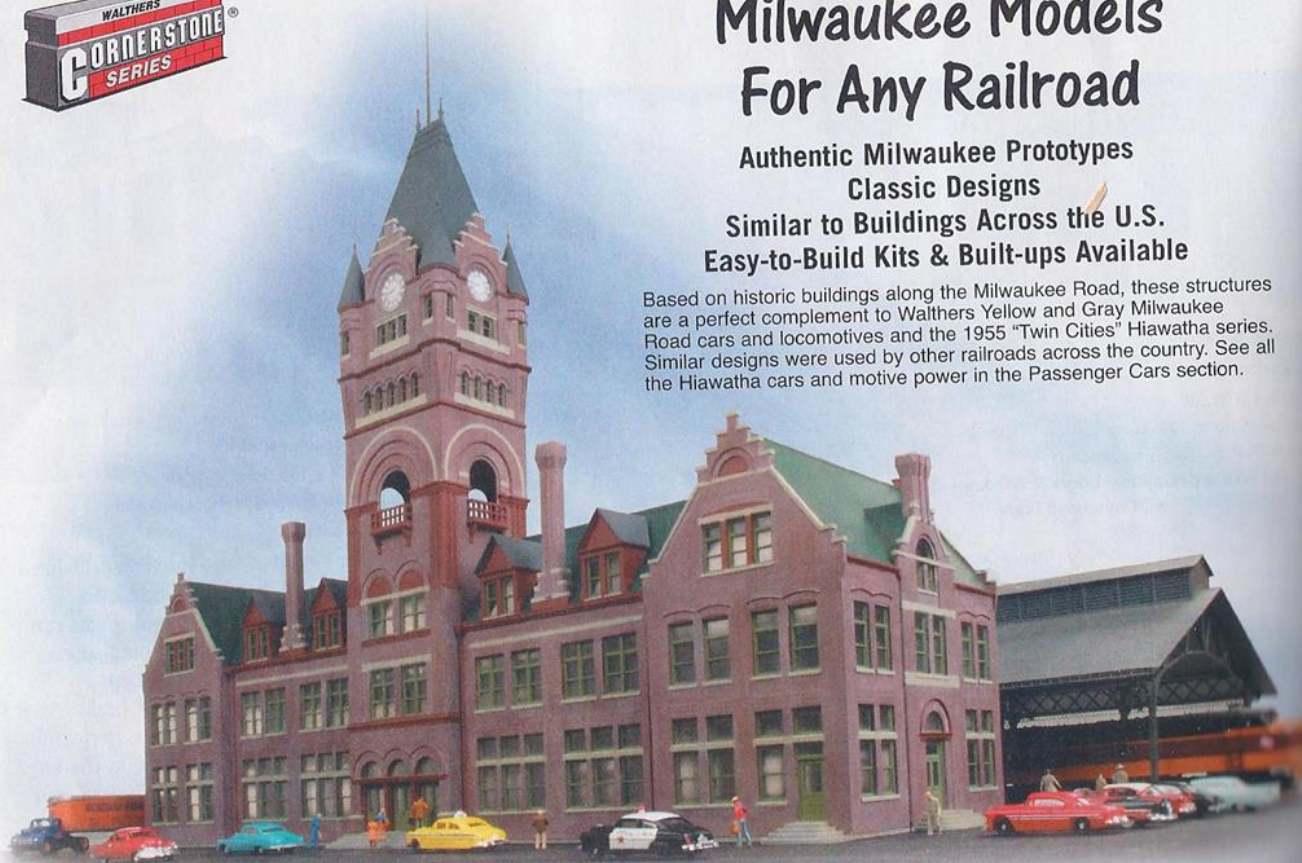


Milwaukee Models For Any Railroad

Authentic Milwaukee Prototypes
Classic Designs

Similar to Buildings Across the U.S.
Easy-to-Build Kits & Built-ups Available

Based on historic buildings along the Milwaukee Road, these structures are a perfect complement to Walters Yellow and Gray Milwaukee Road cars and locomotives and the 1955 "Twin Cities" Hiawatha series. Similar designs were used by other railroads across the country. See all the Hiawatha cars and motive power in the Passenger Cars section.



MILWAUKEE-STYLE STATION & TRAIN SHED

933-2943 Kit 259.99

- Inspired by Milwaukee's Grand Central Station
- Used From 1887 to 1985
- Two Complete Kits
- Sized to Fit Most Layouts

Saginaw Potter Street Station

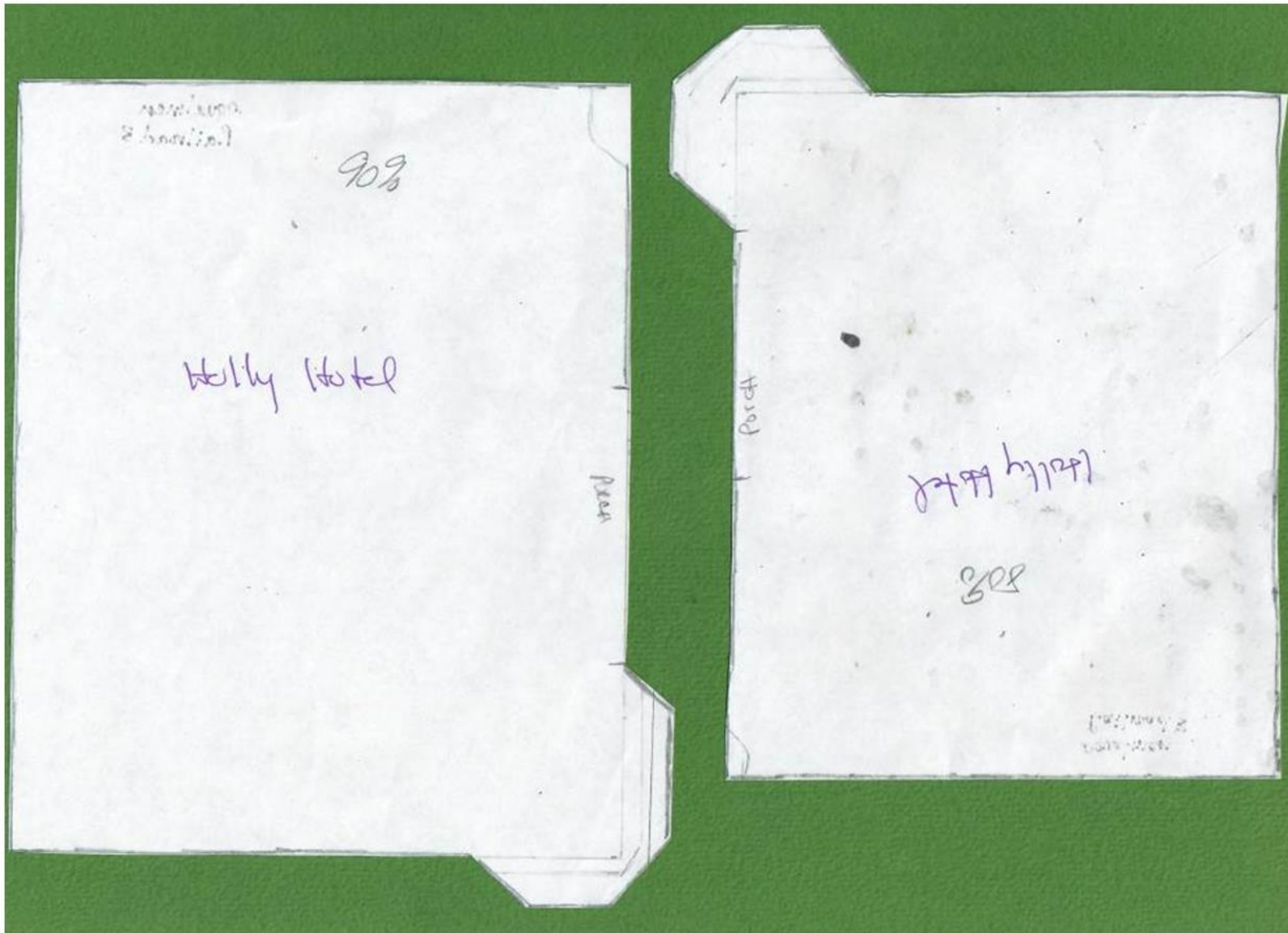




Tools



Decide on the Size



Holly Hotel 1950



Tily Homes



Tily House



Architectural Model



Model



Back of House



Uncle Bert's



Front of Uncle Bert's

Front of Uncle Bert's





Back of Uncle Bert's



Aunt Dot's



Aunt Dot's

Aunt Dot's



Front of Aunt Dot's



Front of Aunt Dot's



DVD



- Pieced together parts of the building

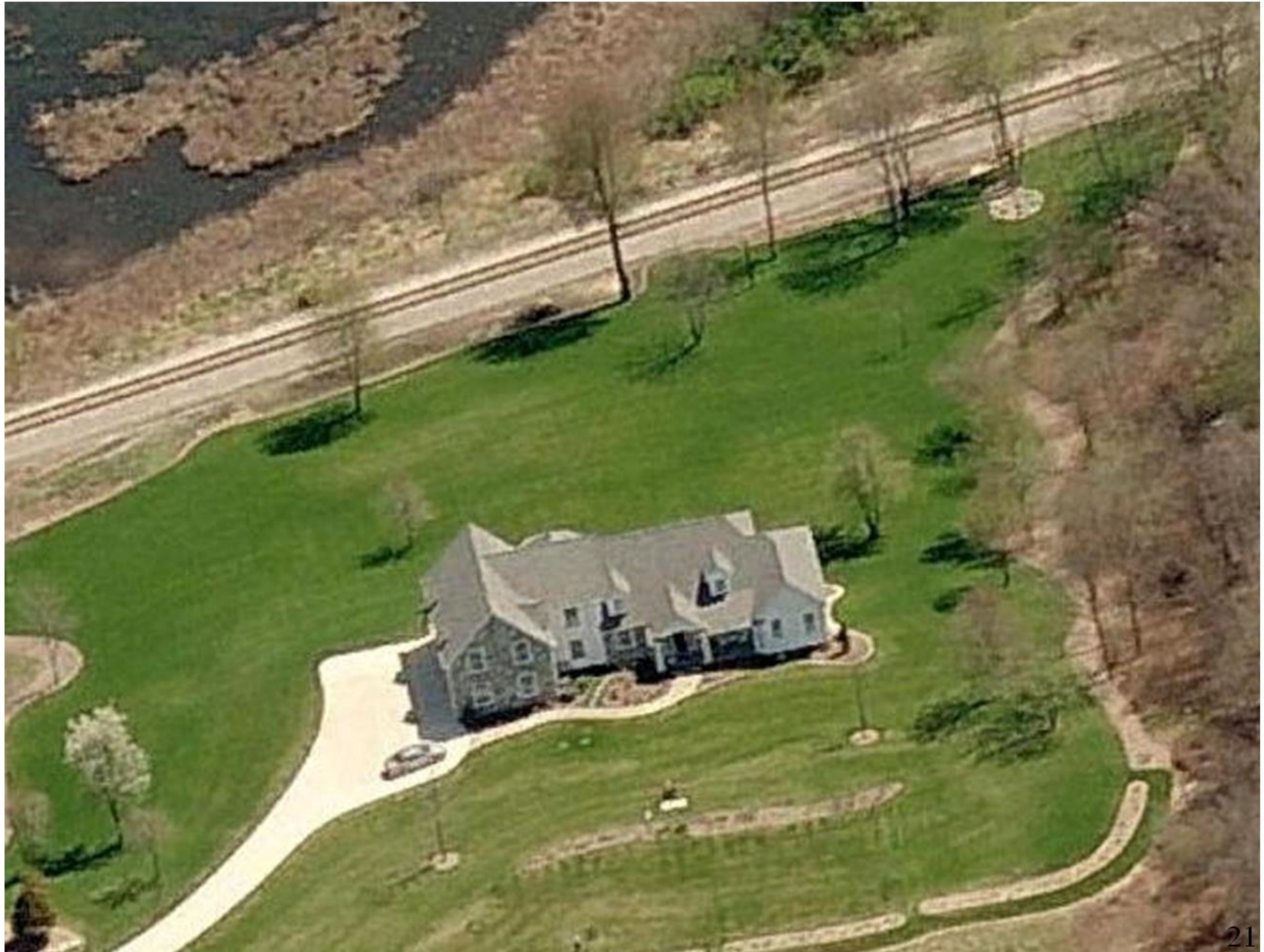
Google Earth street view and roof view



Back of Aunt Dot's



Bing Maps







Google Earth street view

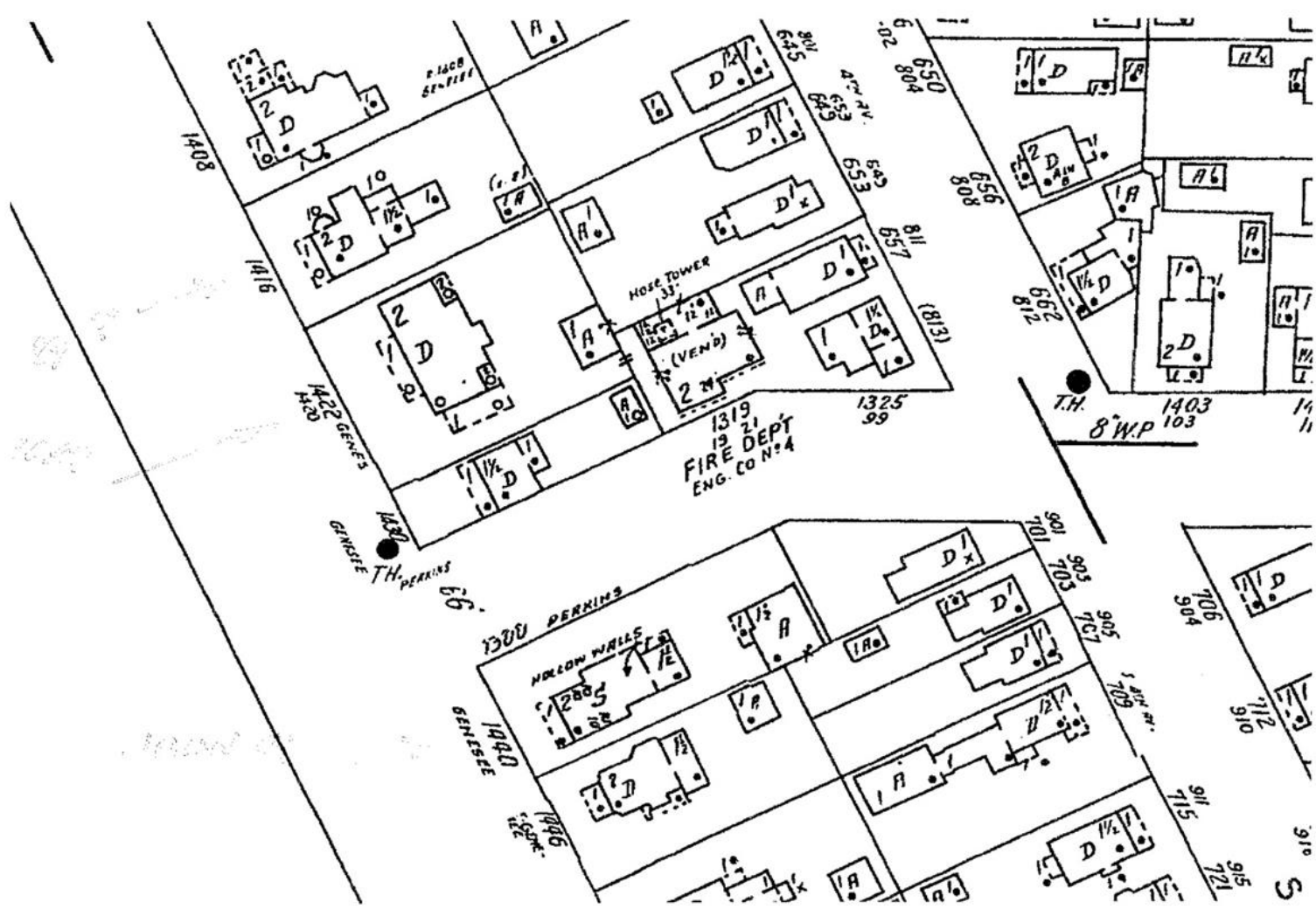




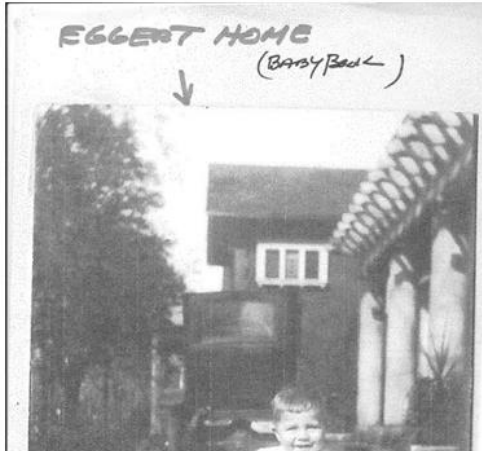
Today



Sanborn Map



Pieces of Eggert Home



Triple box window + porch columns
+ roof



More windows



Port couchere + chimney

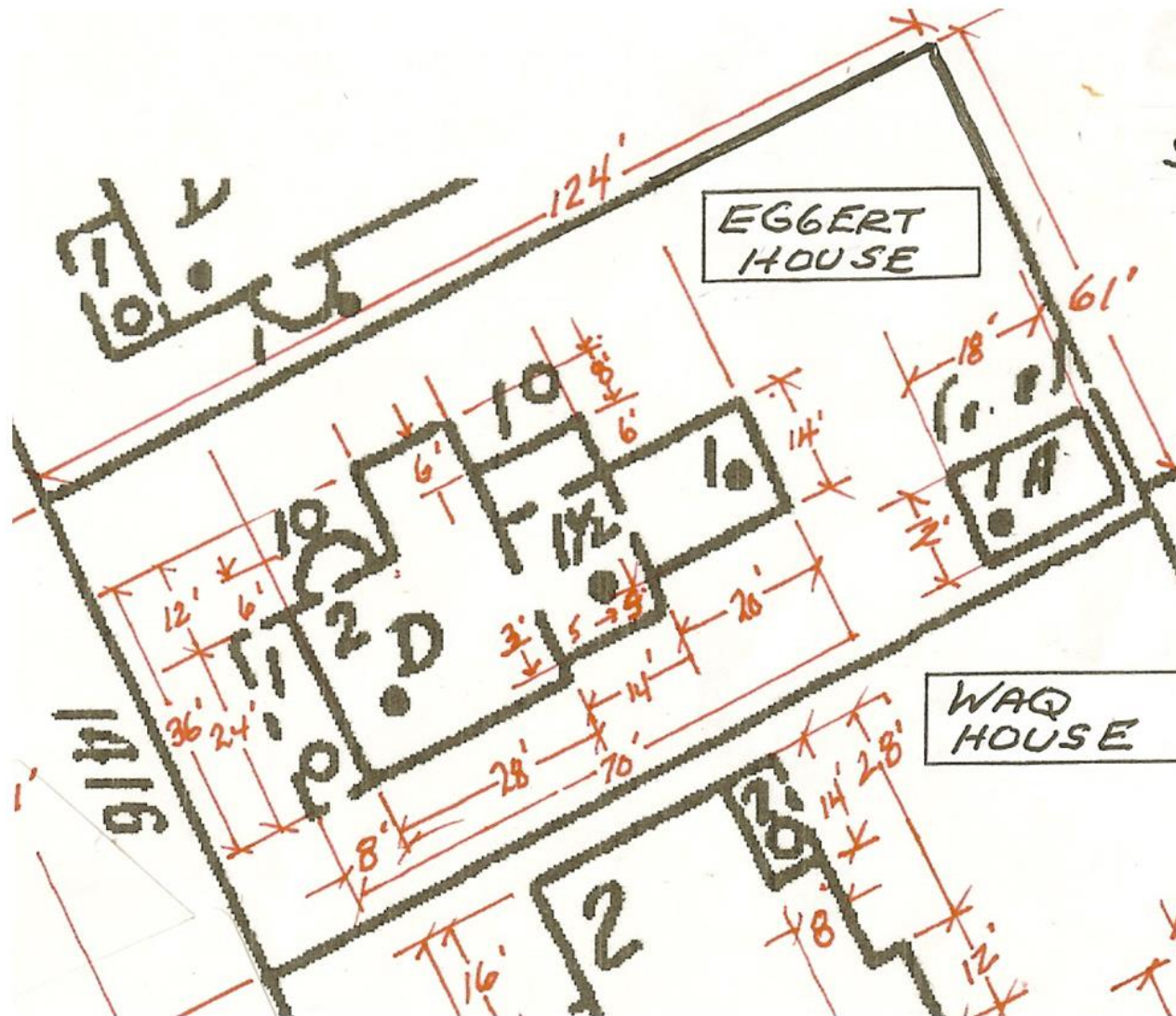


Lower windows + basement window

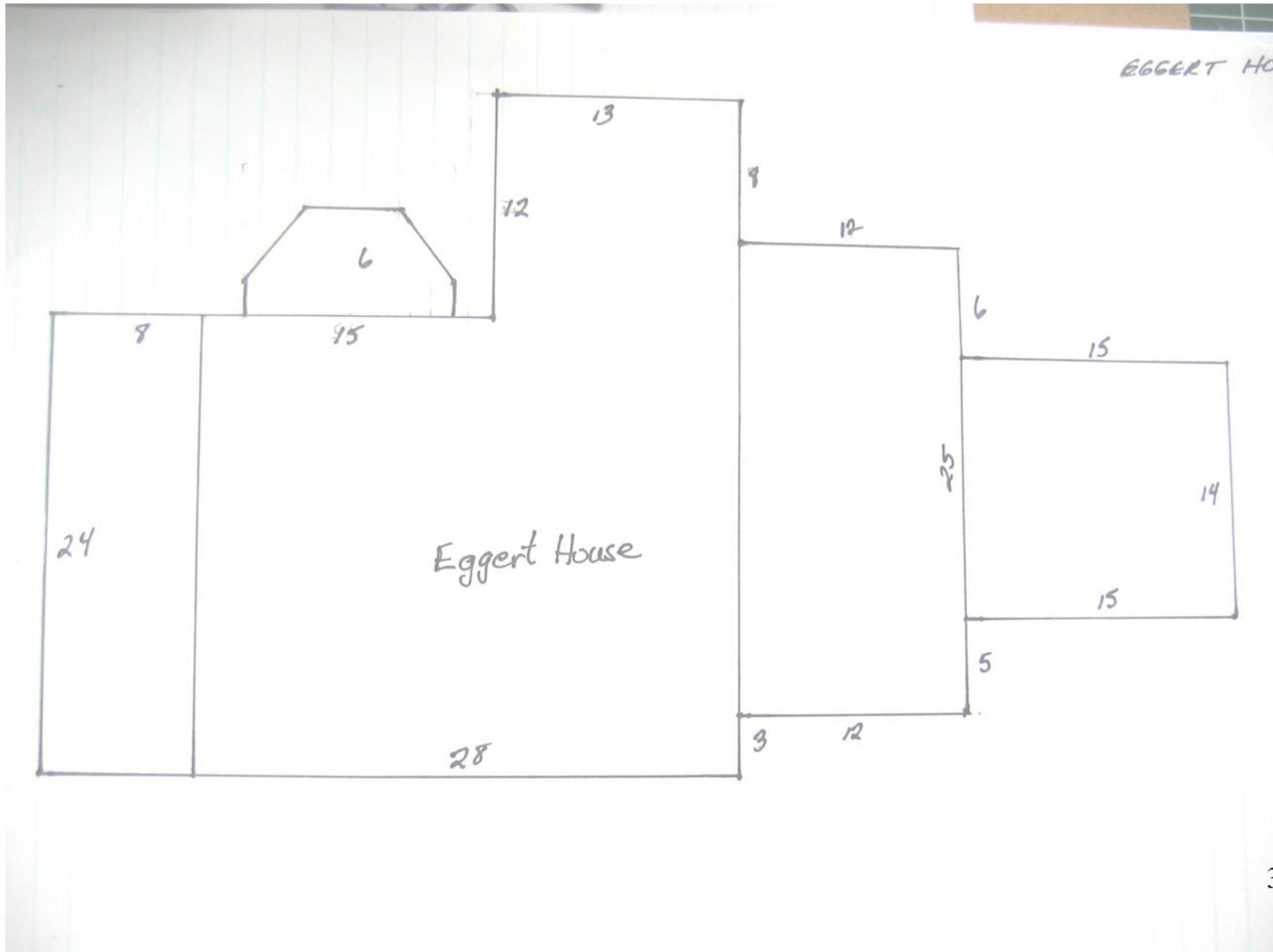


Porch + Windows + Quoin

Measurements for Eggert Home



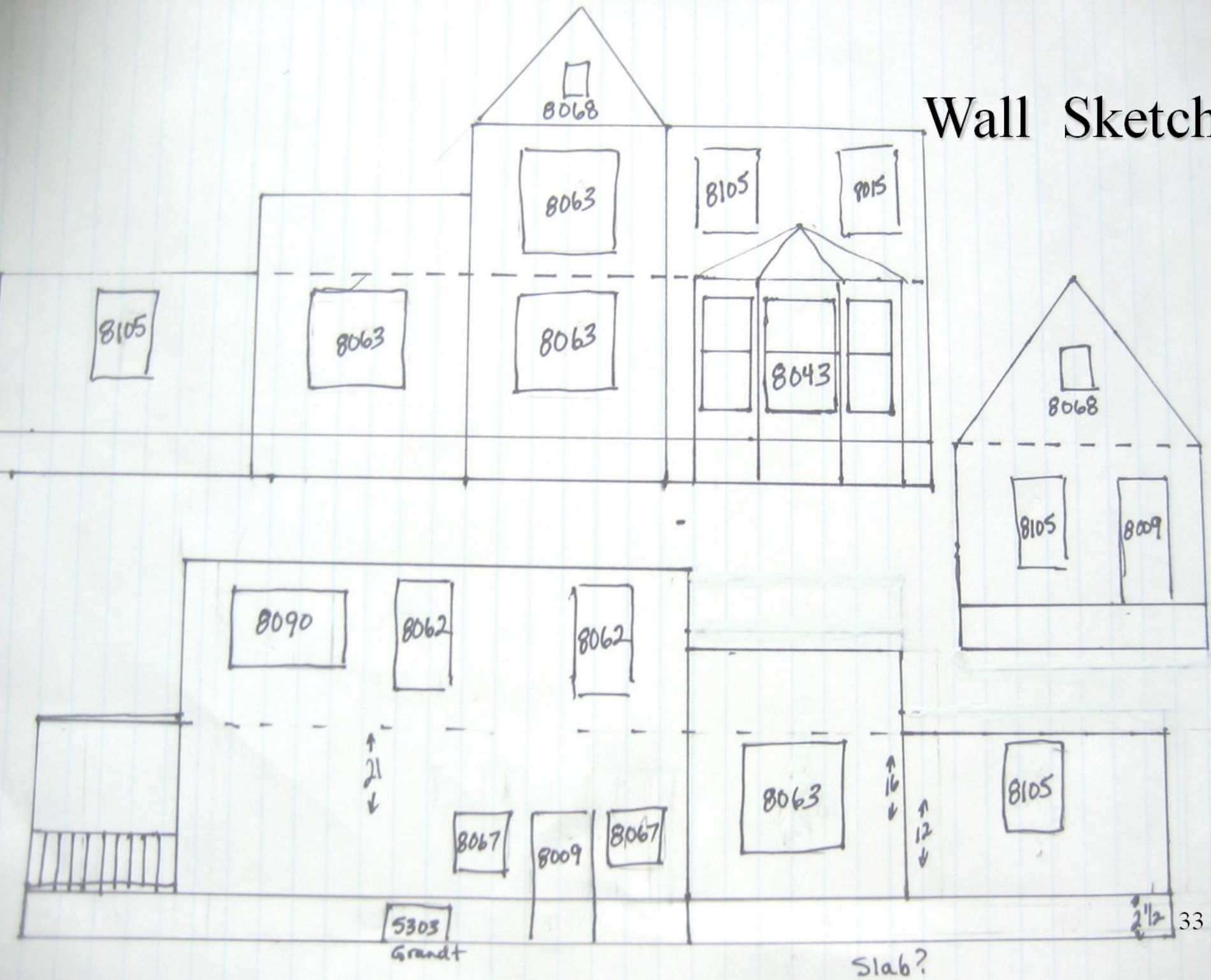
Eggert Home Layout



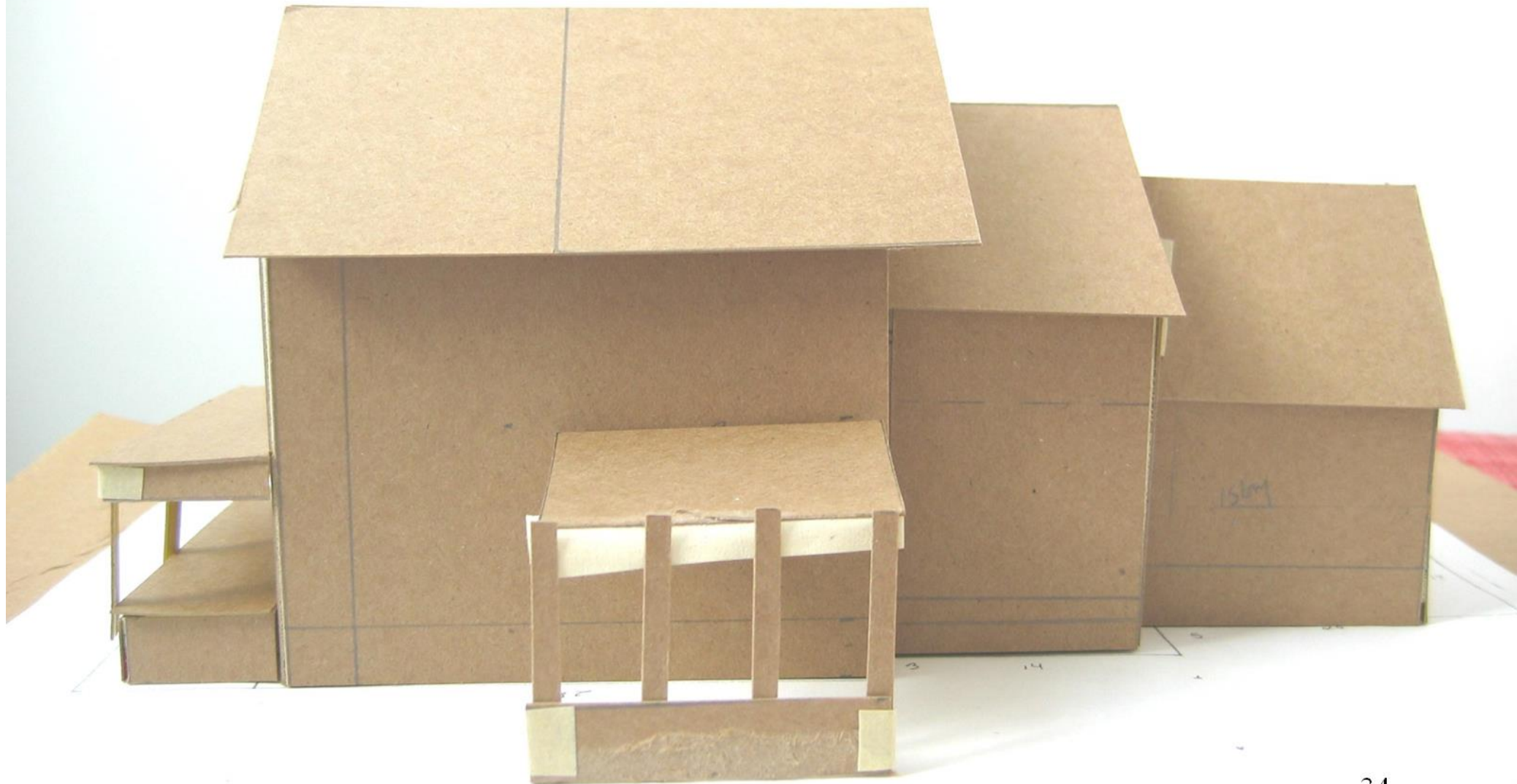
Window Placement



Wall Sketch



Cardboard Model



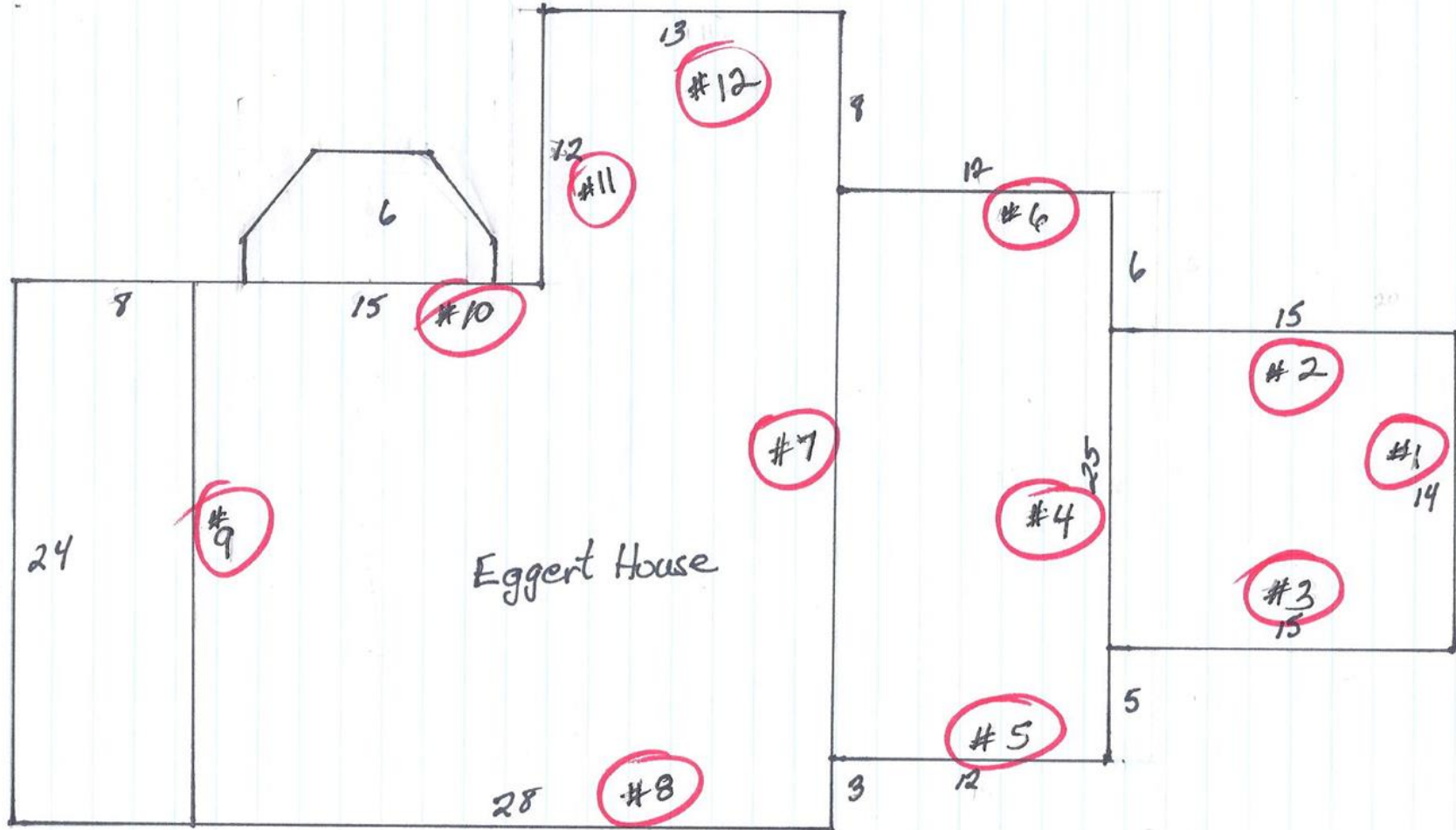


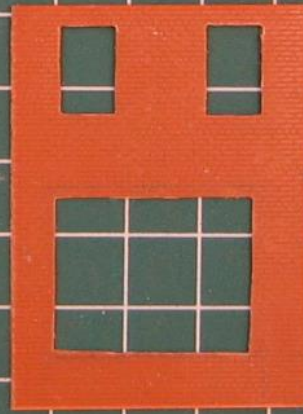
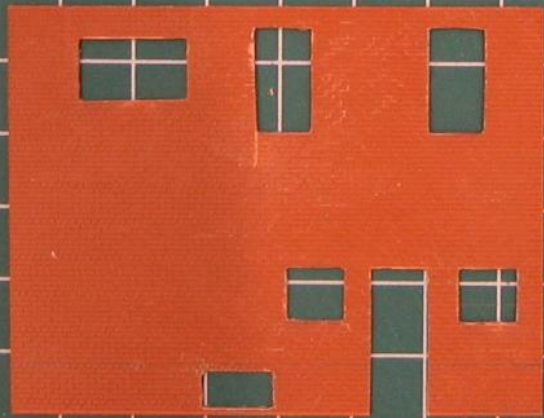
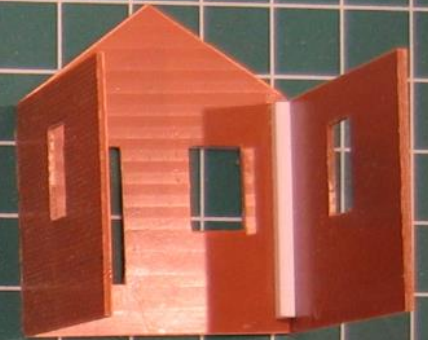
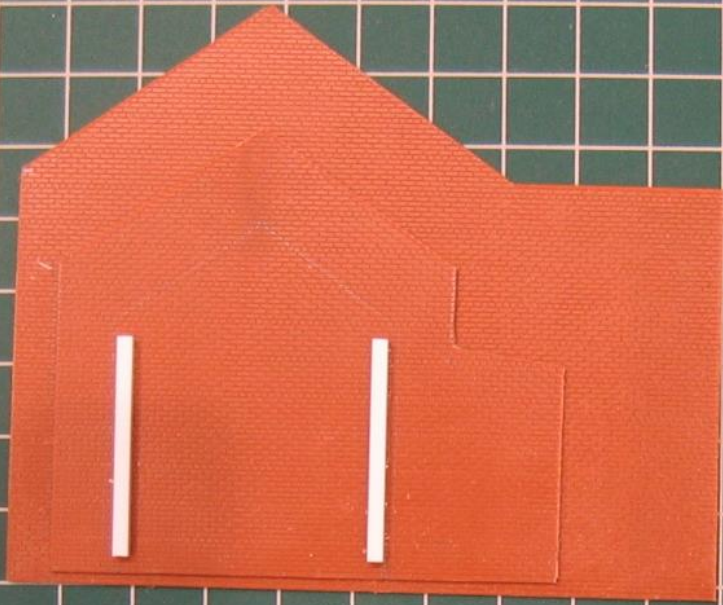
13



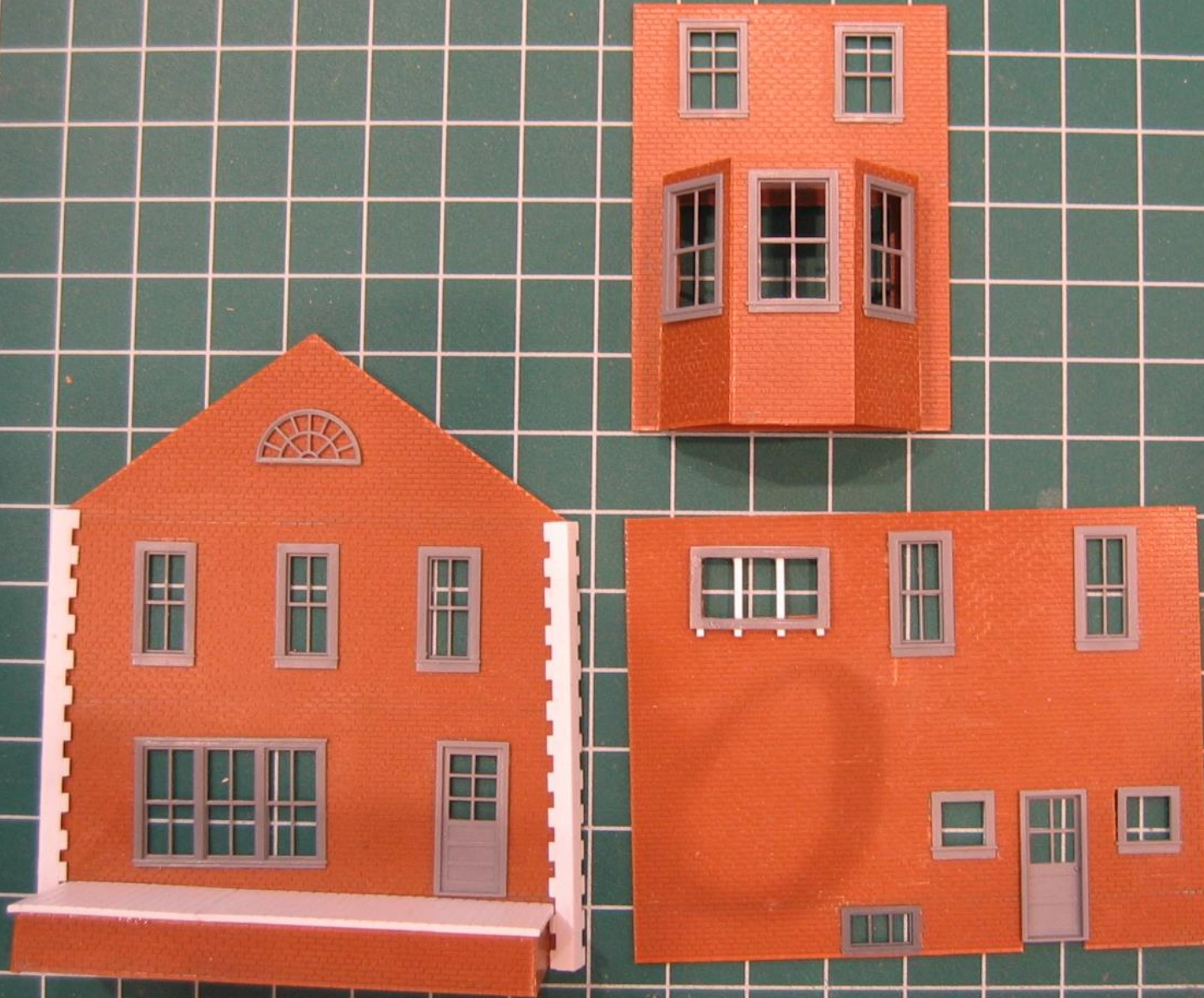
Number the Parts

EGGERT HOUSE





Check for Fit

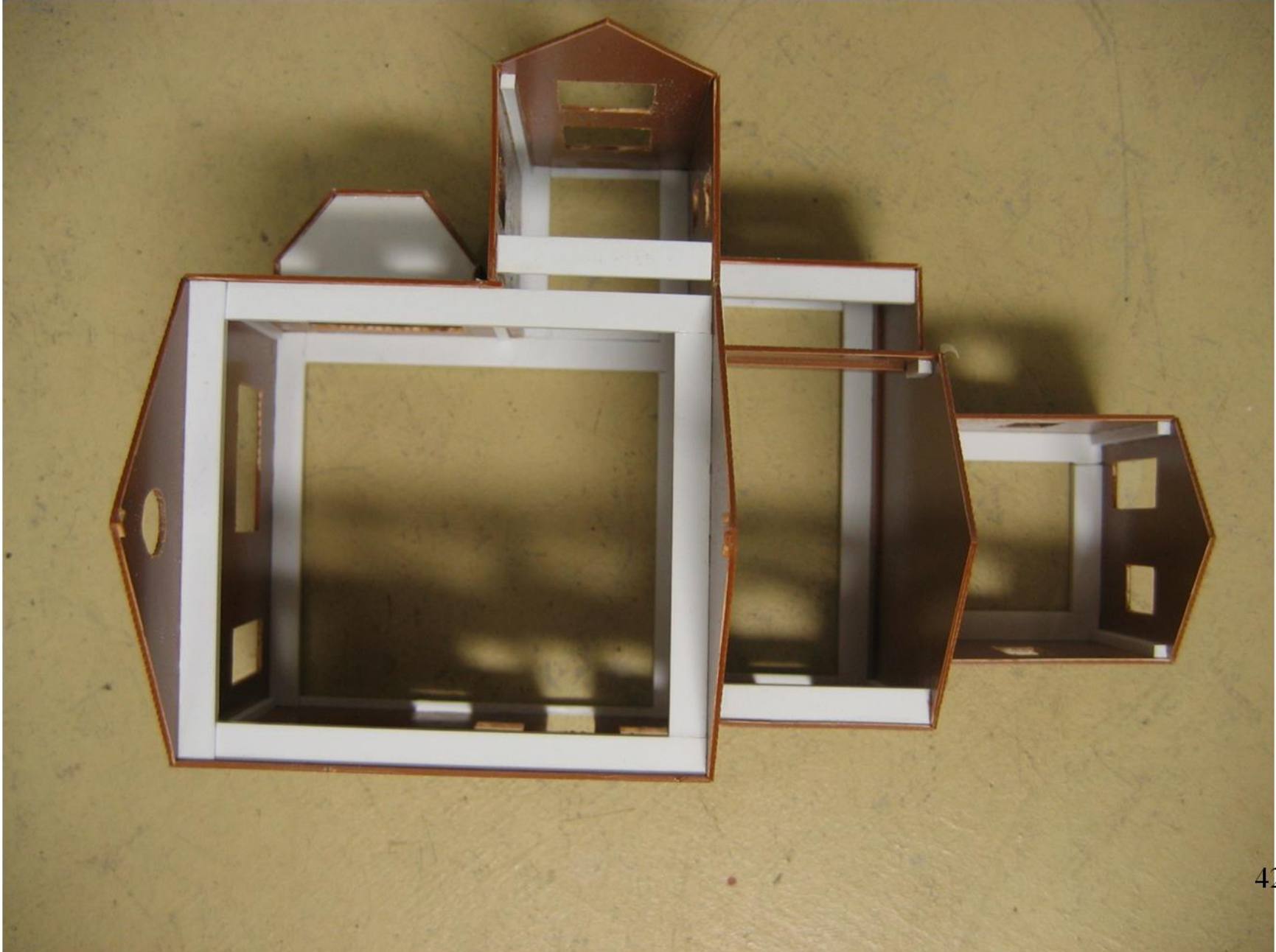


Assemble



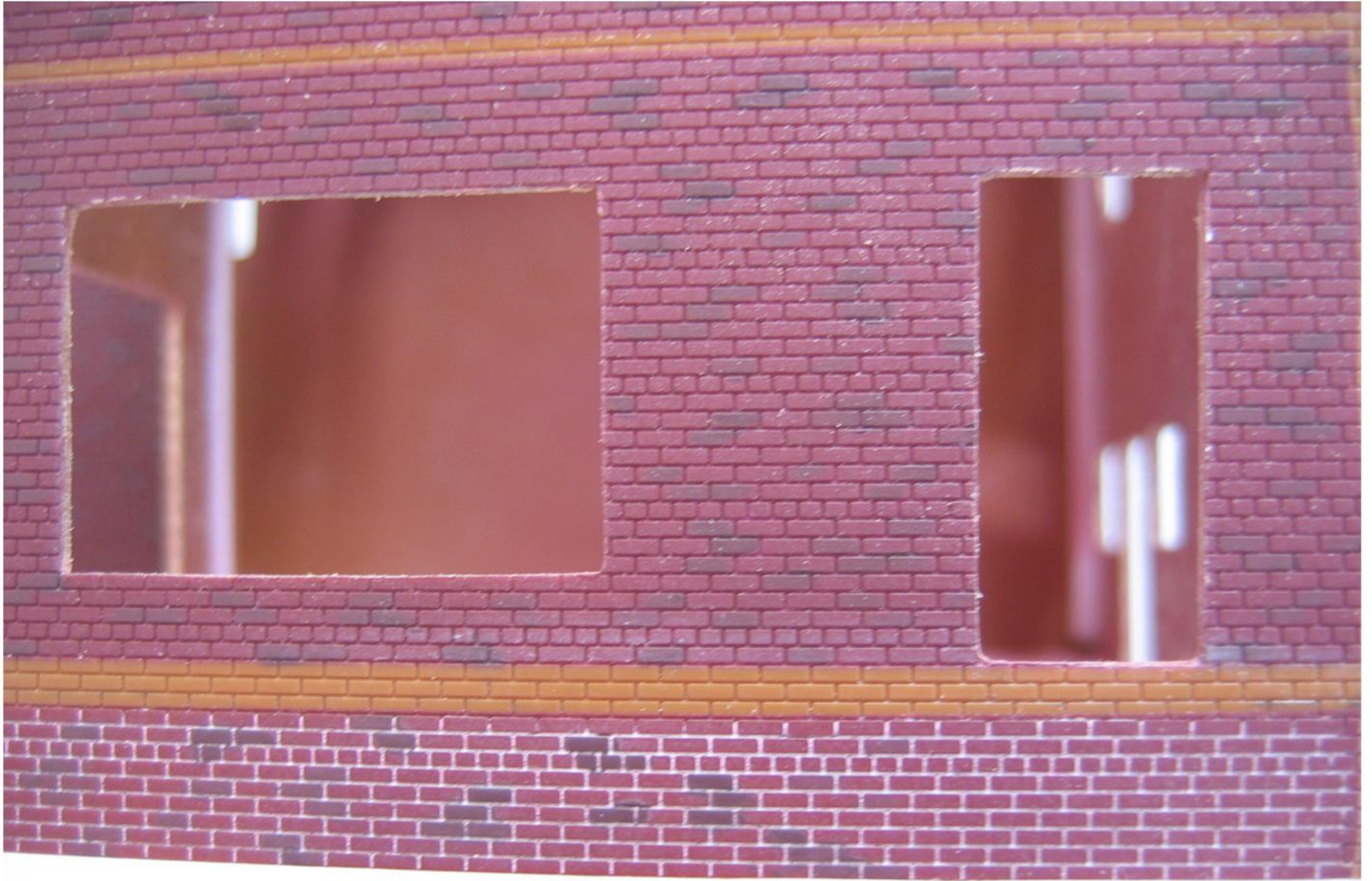


Bracing



Tape where glue will be needed.





Paint



Don't
forget
Gutters,
down-
spouts
and
electrical
boxes



Eggert House



Finished Product















Here it is on
our Layout



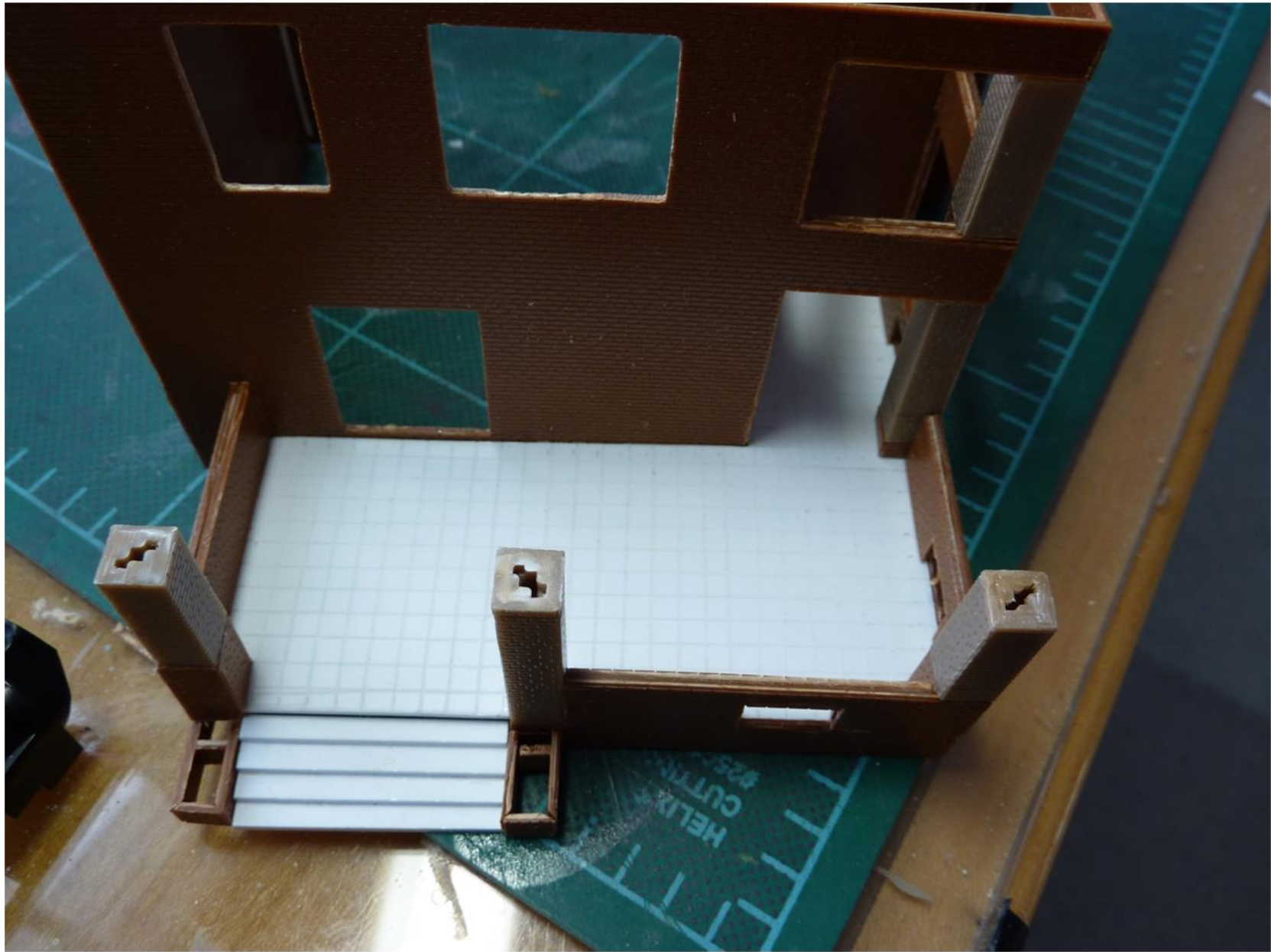
Walter A Qualman Home



House in Early 2000's



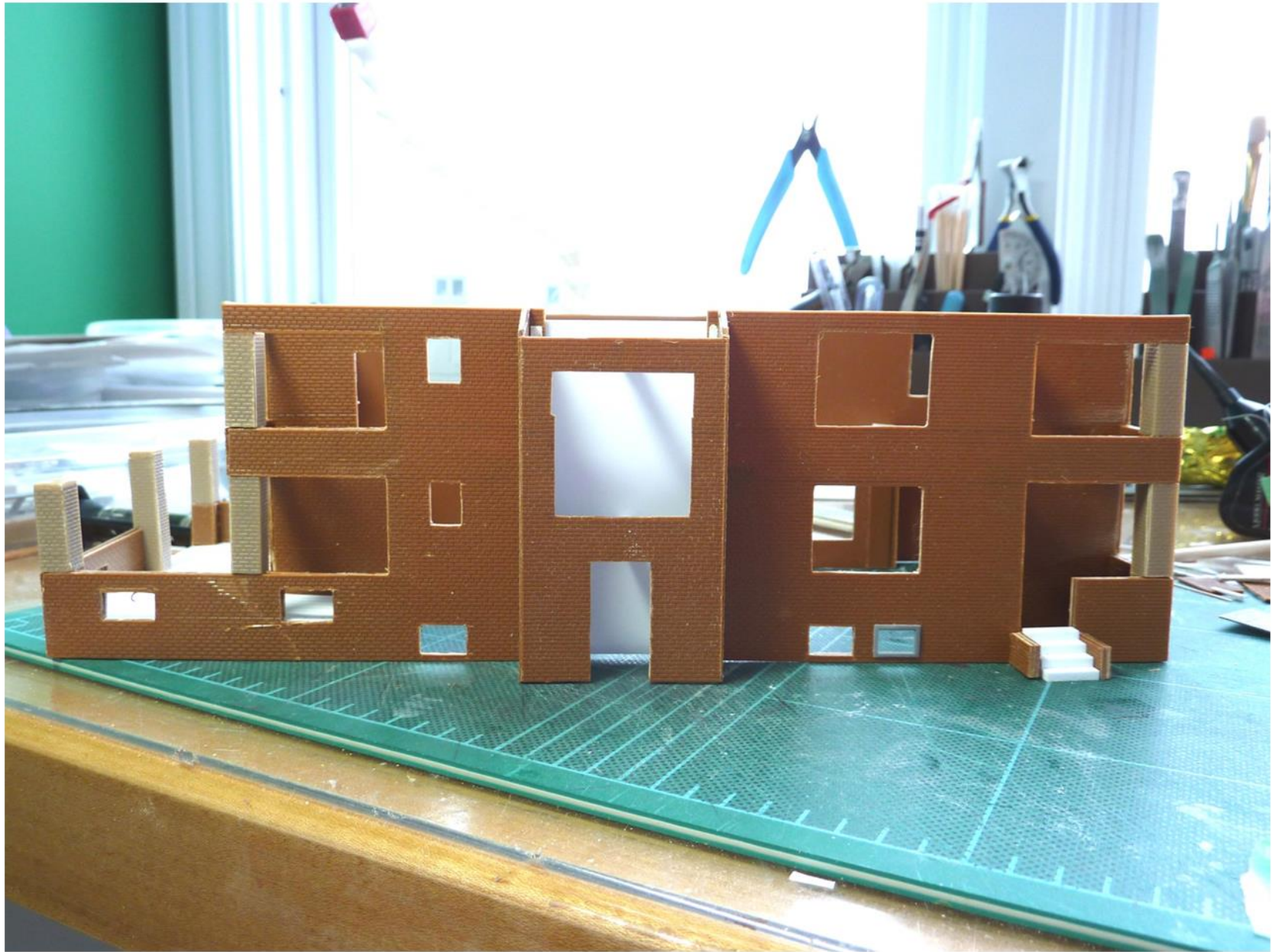






Back of House





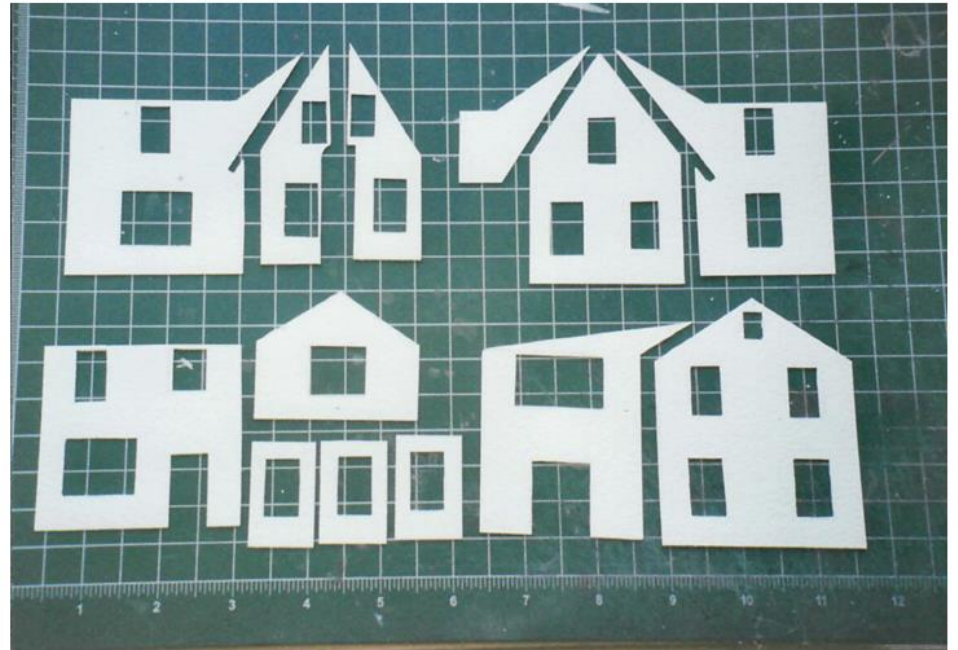


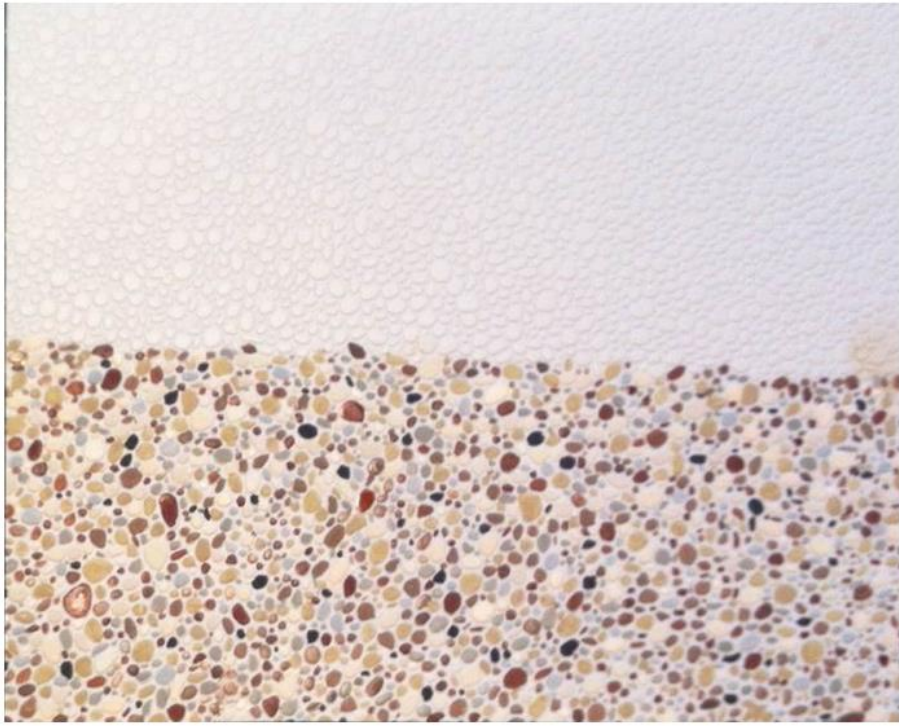






Stucco

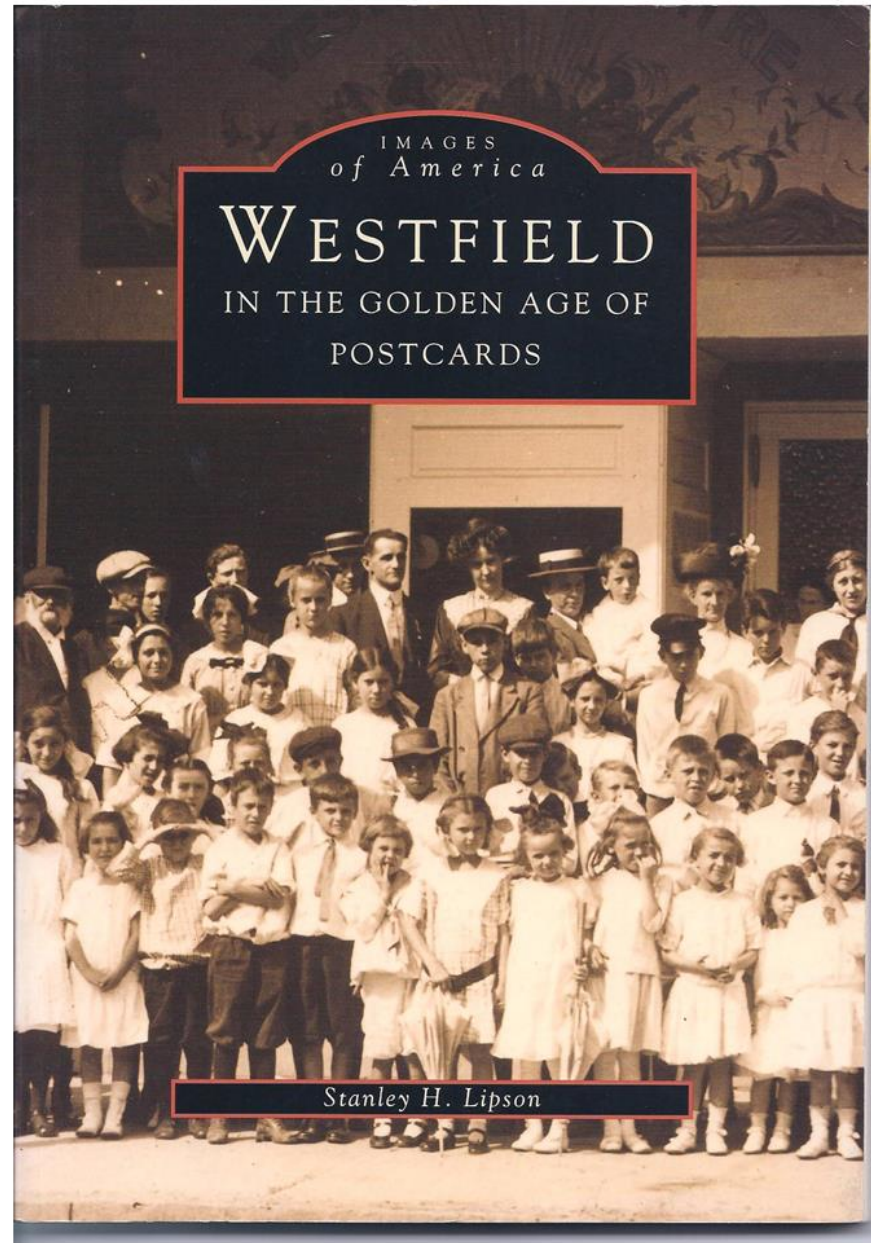




I paint the stone before I cut



Acadia or Postcard Books



My Home Ages 8-14



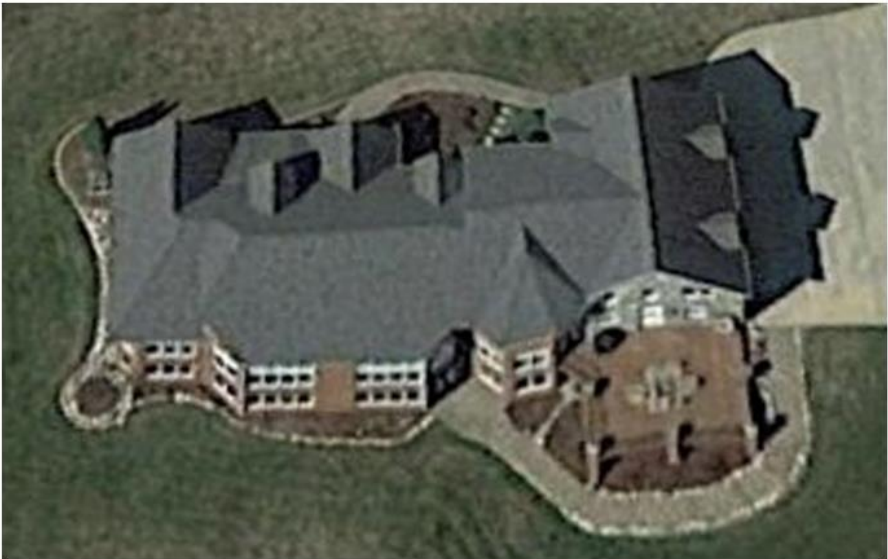
Euclid Avenue, c. 1908. (Schaefer and Frutchey)

Same Home Today

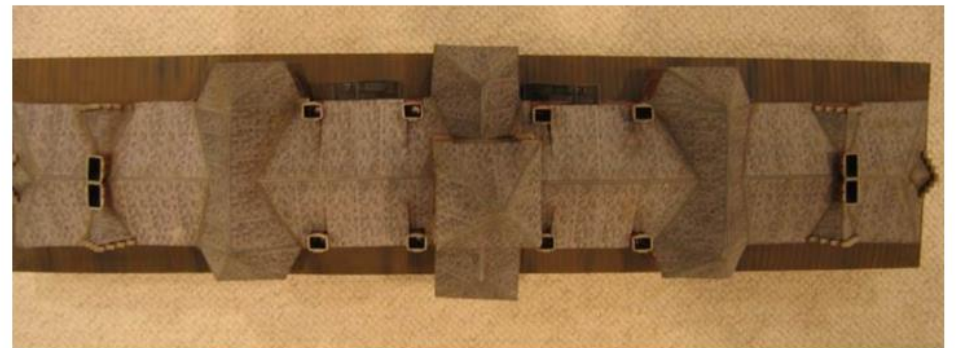




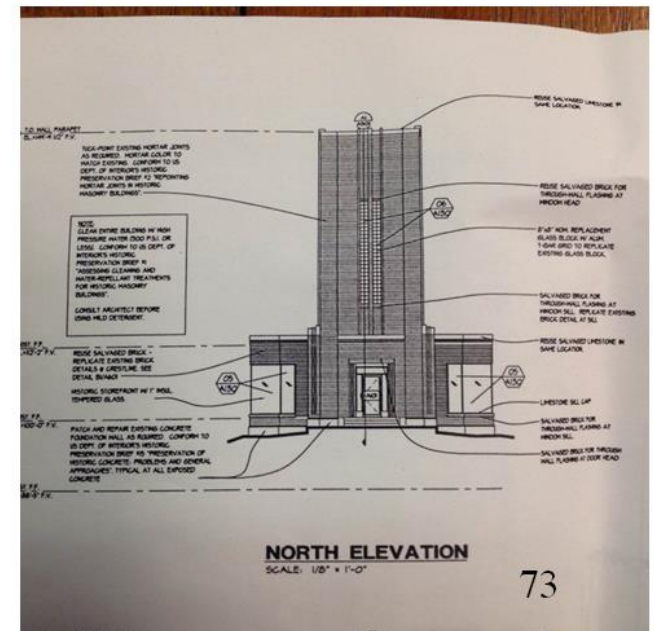
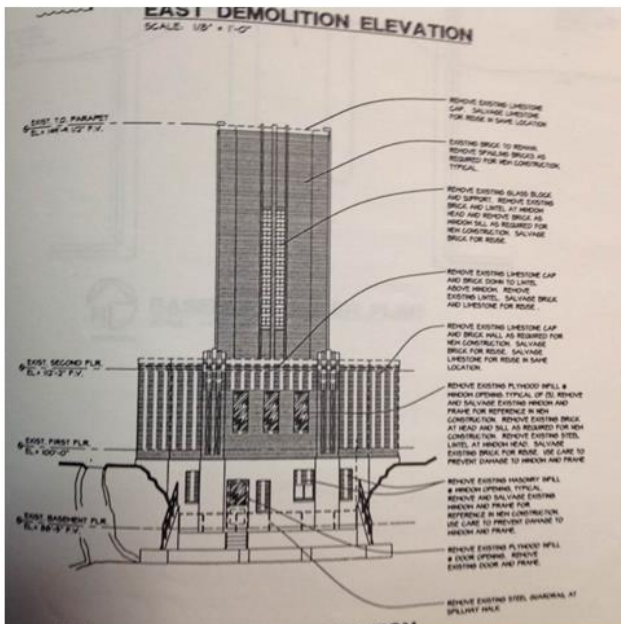
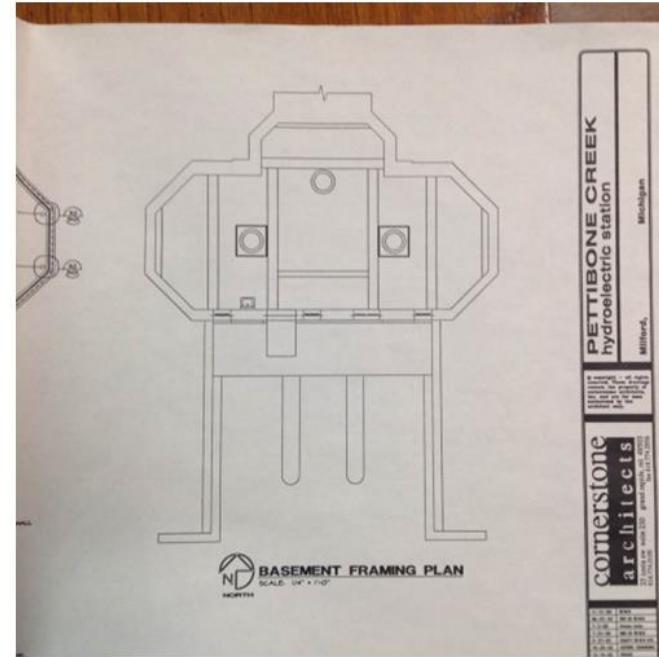
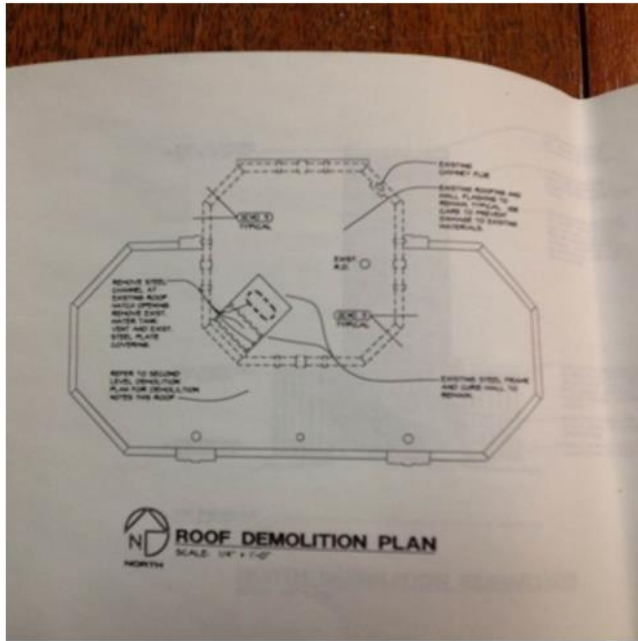
Google Earth



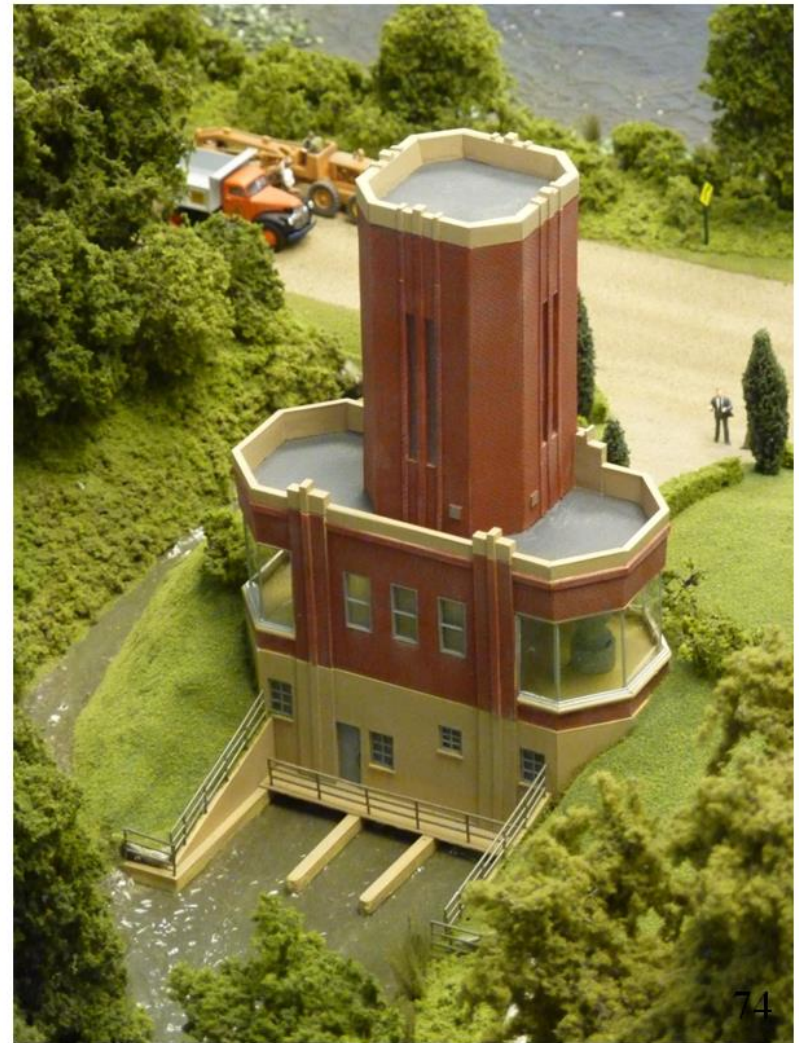
Roofs can be complicated



Blueprints



Milford Power House



Summary

- Gather all the pictures you can find
- Call or email relatives (if appropriate)
- Visit Bing Maps and Google Earth
- See if Acadia has a book for your area
- Check online to see if there is a website on the area you are modeling “I Remember That in Milford”- on Facebook
- Check your local library and historical society or the library and historical society of the town where the building is located
 - For reverse directories or phone books
 - Historical pictures
 - Sanborn maps

Thank You